



## Stacey Hiebert

Farm Sales Specialist

Royal LePage Riverbend Realty Farm Division  
105-150 Penfeld Dr.  
Steinbach, MB

Cell: (204) 371-5930 | Office: (204) 326-4567  
Fax: (204) 326-4985  
[staceyhiebert@royallepage.ca](mailto:staceyhiebert@royallepage.ca)  
[www.farmdivision.ca](http://www.farmdivision.ca)



**\$1,100,000 | 36.00 Acres |**

Recreational property  
Beausejour, MB

Nestled among mature trees, this well established 36 acre campground offers a scenic and relaxing retreat for outdoor enthusiasts. With 61 fully serviced campsites, each is equipped with individual hydro metre. At the heart of the campground, a spacious clubhouse services as a gathering space perfect for social events, entertainment and community activities. Inground pool to cool off on those warm summer days. Located in a prime setting, this campground sits directly across from Mars Hill Golf Course, making it an ideal destination for golf lovers looking to enjoy both recreation and relaxation. The expansive natural surroundings provide plenty of space for outdoor activities, ensuring a memorable experience for all visitors. With a strong customer base and incredible potential for growth, this turnkey business is an excellent investment for those looking to step into a thriving hospitality venture. Whether you choose to maintain its current success or expand with additional amenities, this campground is a rare opportunity in an unbeatable location. Don't miss out on this chance to own a profitable outdoor retreat! Call for more info or to schedule your private tour. Contact listing agents Andy Bergmann at 204.392.8484 or Stacey Hiebert at 204.371.5930

## Listing Details

<b>Property Id #:</b>	18842
<b>Price:</b>	\$1,100,000
<b>Farm Type:</b>	Recreational property
<b>Acreage (Total):</b>	36
<b>Municipality / County:</b>	RM of Brokenhead
<b>Province:</b>	Manitoba
<b>Postal Code:</b>	R0E 0C0

## Residence Remarks

<b>Primary Residence:</b>	Cottage office building consists of 1 bedroom, office, kitchen and living room with veranda and laundry room. Equipment storage tents
	Clubhouse includes main room, pool table and shuffleboard, lounge area and kitchen.
<b>Secondary Residence:</b>	Gym hosts an elliptical machine, weight machine and bench as well as a recumbent bike.
	Swimming pool area with shaded gazebos, pool tables and chairs as well as loungers

## Property & Land Remarks

<b>Property Legal Description:</b>	Lot 3 Pln 46692, 38087 MILE 86N
<b>Acreage (Total):</b>	36

## Additional Listing Remarks

<b>Machinery Remarks:</b>	Vehicles & Equipment include: Golf Cart, John Deere Lawn Tractor, Honda Push Mower, Pole Saw, Husky Power Saw, Weed Whacker and Ford Tractor
<b>Property Taxes:</b>	\$5,233.57

## How to View

<b>How to View:</b>	Through listing agents Stacey Hiebert 204.371.5930 or Andy Bergmann at 204.392.8484
---------------------	---



## Property Photos

Listing #18842





## Property Photos

Listing #18842





## Property Photos

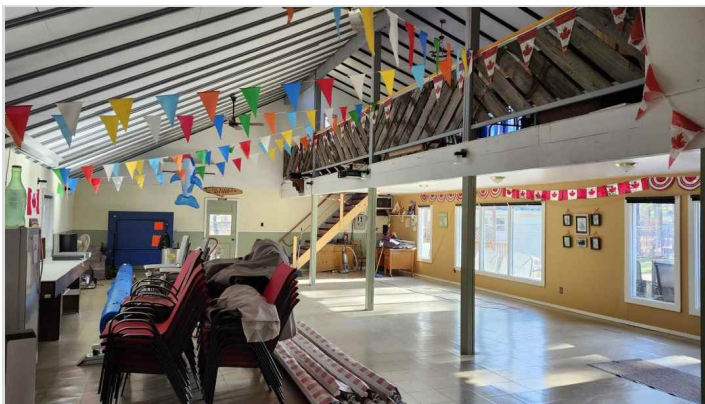
Listing #18842





## Property Photos

Listing #18842





## Property Photos

Listing #18842

